

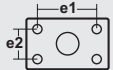


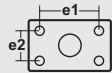
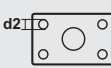
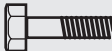


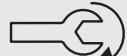





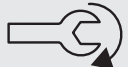

## RINGFEDER® Trailer couplings RF50 AM AUS

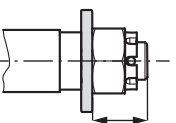

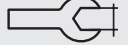


**EN** The couplings in this instruction are certified according to UNECE R55. They are exclusively intended to be used together with drawbar eyes according to standard DIN 74054 or ISO 8755 regarding Ø40mm coupling bolt and DIN 74053 or ISO 1102 regarding Ø50mm coupling bolt respectively. Other areas of use than interconnection of vehicles according to UNECE R55 or ISO 18868 require a consent from the manufacturer. When replacing a used coupling, all the parts included in the new coupling delivery shall be replaced. The installation shall be done by a professional and in accordance with this instruction as well as with the requirements in appendix 7 in UNECE R55.

 50 mm	 <b>UNECE 55 R</b>		<b>D (kN)</b>	<b>Dc (kN)</b>	<b>S (kN)</b>	<b>V (kN)</b>	 <b>e1 x e2 (mm)</b>
RF50 AM AUS	C50-X E11 55 R-01-10486	320	135/135/170	1000/2000/1000	75/63/60	160 x 100	

<b>I</b>	 <b>e1 x e2 (mm)</b>	 <b>Ø d2 (mm)</b>		 <b>ISO 7089</b>	 <b>ISO 7042</b>	 <b>Nm (±5%)</b>	 <b>mm</b>
	160 x 100	21	M20 (≥ 8.8)	≥ 200 HV	≥ 8	390	30

<b>II A</b>			 <b>Nm</b>	 <b>mm</b>
		M 45 x 3	1500-2000	70

<b>II B</b>			 <b>mm</b>
		M 45 x 3	70



Installation



Function check



Pinch point!



Open/unlocked



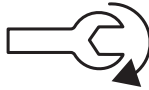
Closed/locked



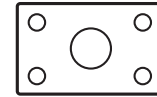
Visual check



Wrench size



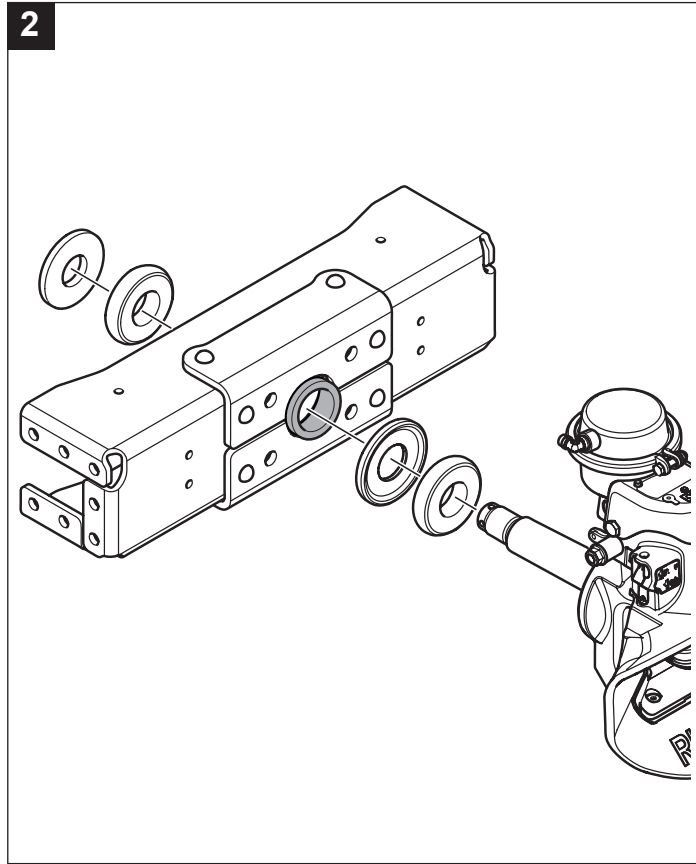
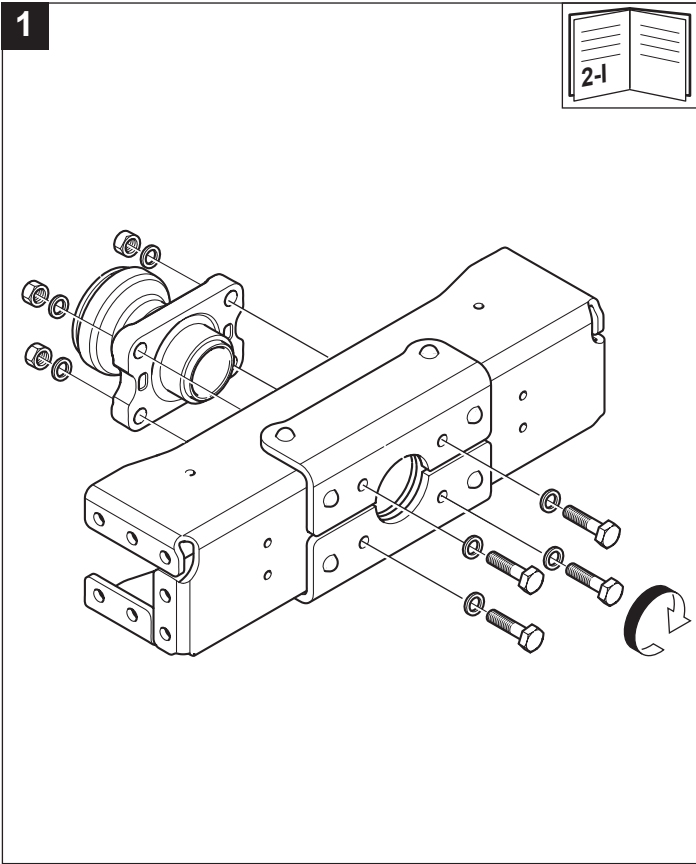
Tightening torque



Hole pattern

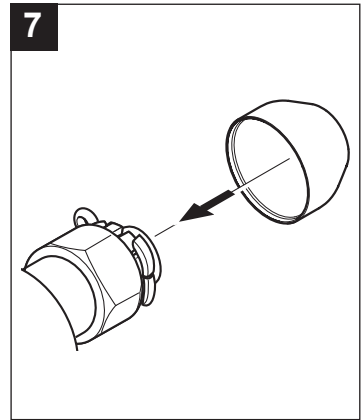
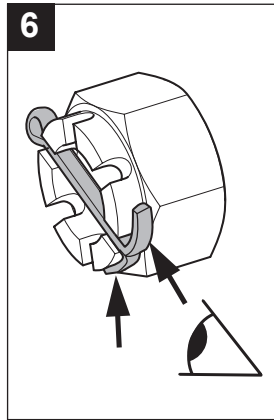
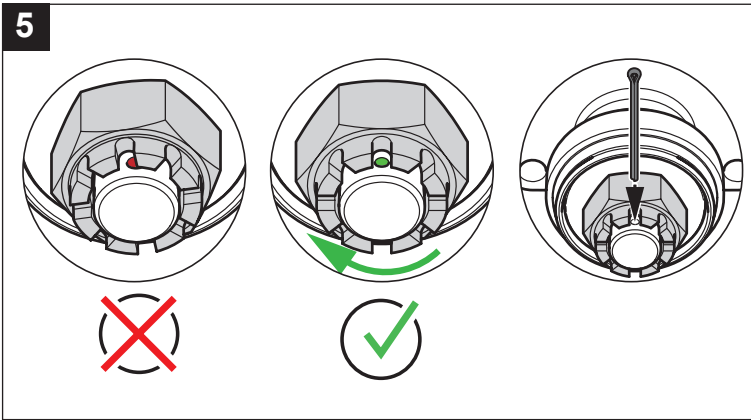
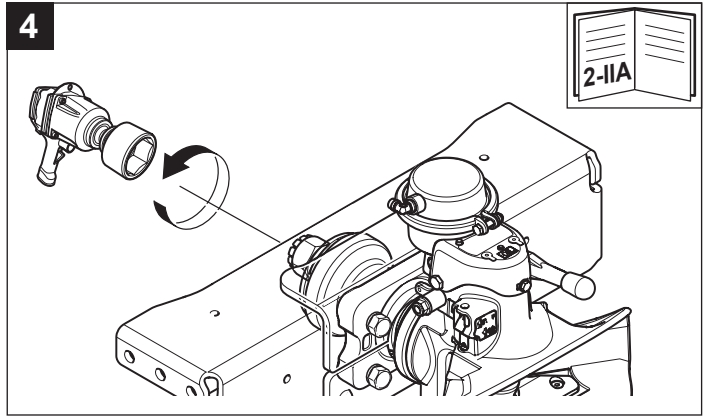
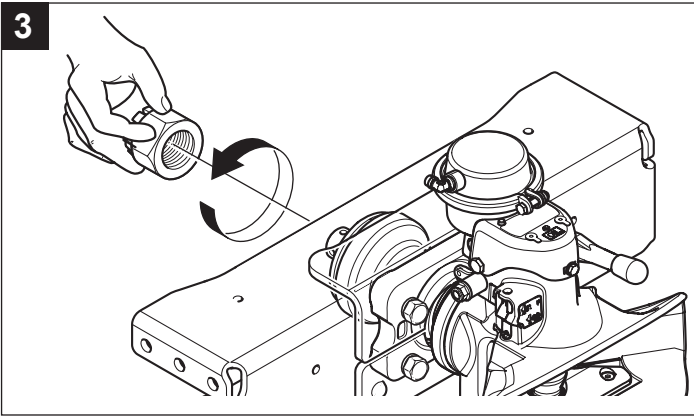


# II A



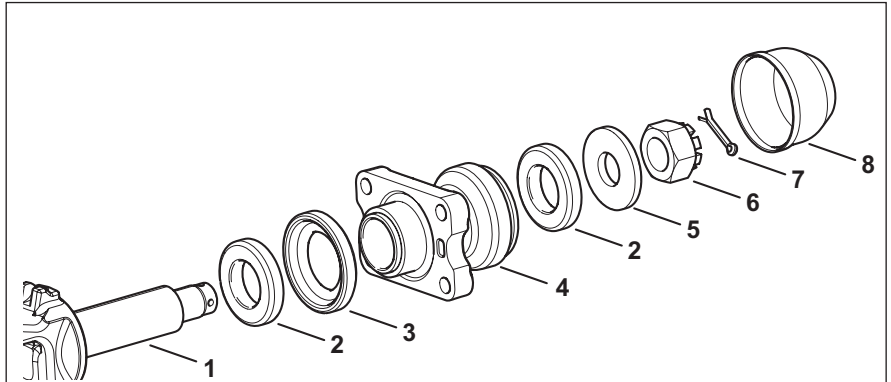
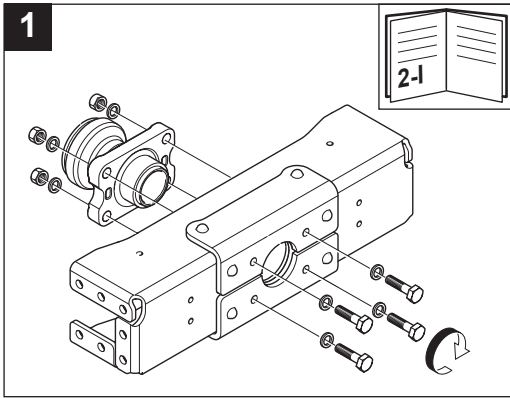


# II A





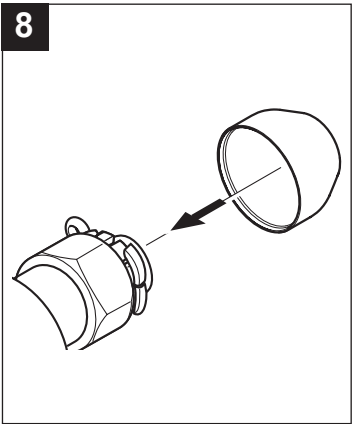
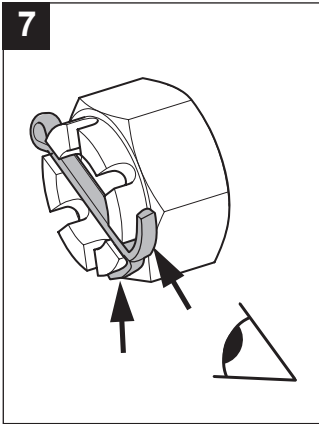
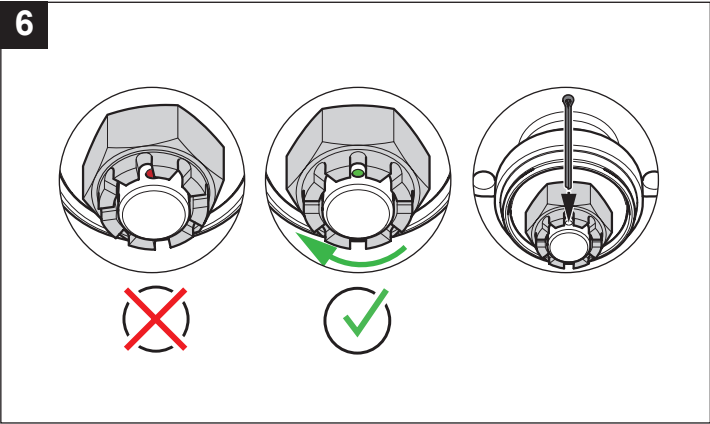
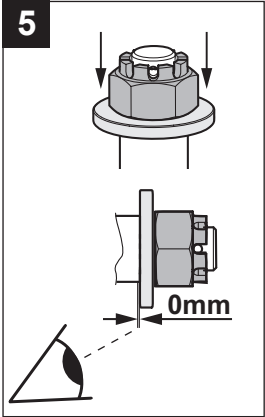
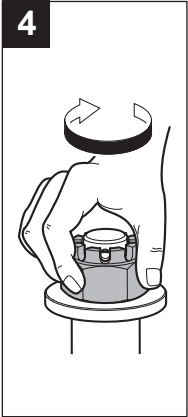
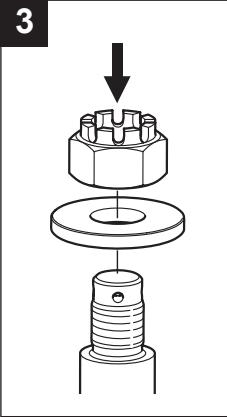
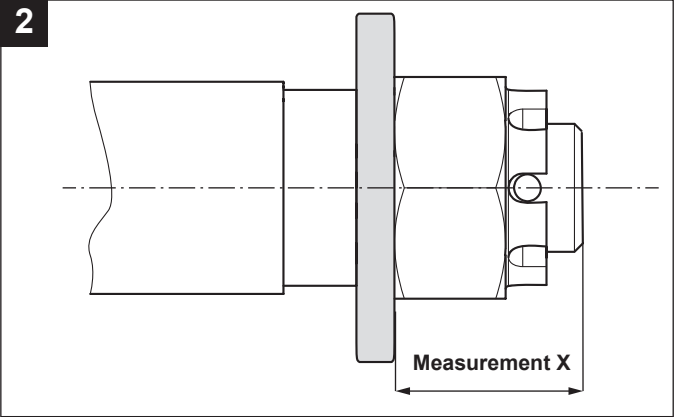
## II B

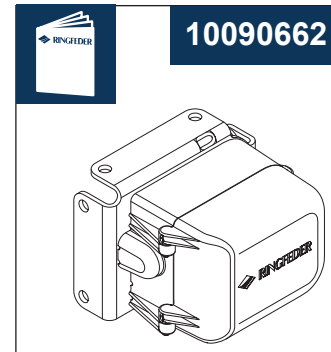
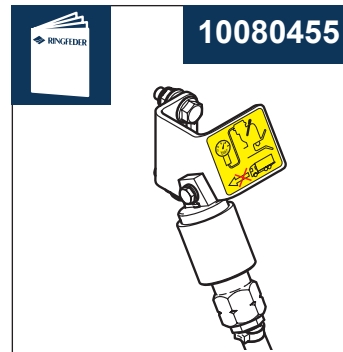
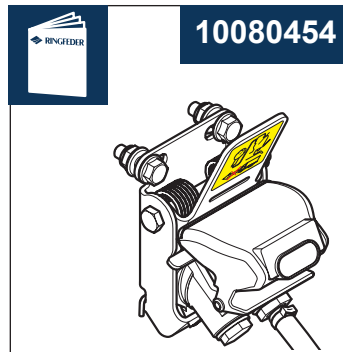
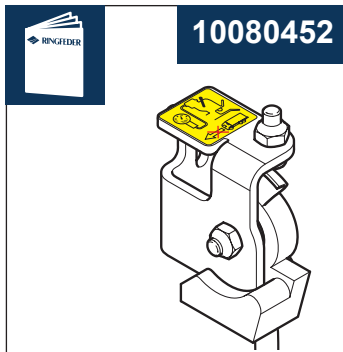
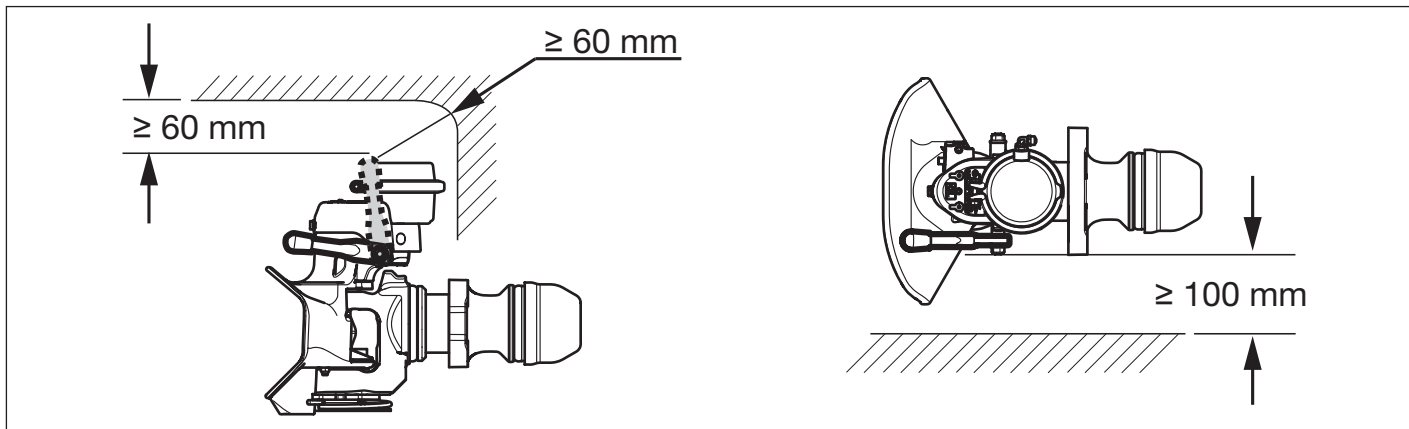


1. Fit tension washer (5) without any other components of the towing device to the drawbar (1) and fully tighten the castle nut (6) by hand (see figures 3-4). Secure that the tension washer has full contact to the bottom of horizontal bolt (see figure 5). Measure the dimension X (see figure 2). Remove castle nut (6) and tension washer (5) again.
2. Fit the coupling head assembly including the front rubber spring (2) and thrust washer (3) to the drawbar guide (4). If required, regrease drawbar (1) and contact surfaces of thrust washer (3) and drawbar guide (4). **Caution: Never grease the rubber spring!**
3. Fit the rear rubber spring (2) and tension washer (5). **Caution: Never grease the rubber spring!**
4. Grease the contact surfaces of the castle nut (6) and tension washer (5). Screw on and tighten the castle nut (6) until the previously measured dimension X is reached again tighten to the next hole position and secure by means of a cotter pin (7) (see figures 6-7). **Caution: Always tighten to the next hole position.**
5. Fit and push on the nut cover (8) (see figure 8) carefully.
6. Straighten the coupling.
7. For a retro-fit please refer to the relevant statutory regulations.



# II B

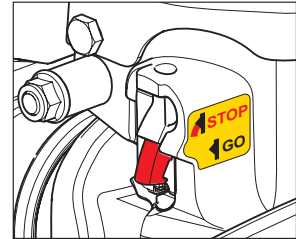
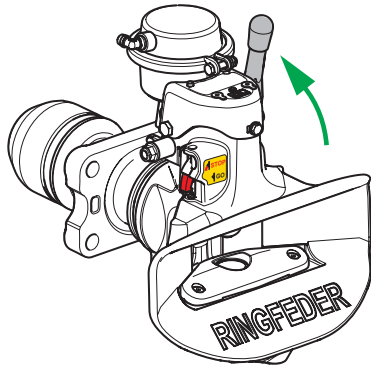




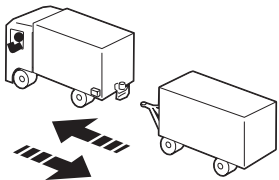




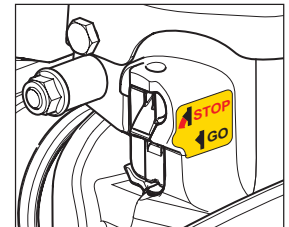
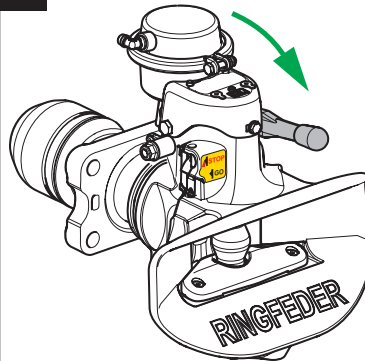
1



2



3





A series of 15 horizontal lines spanning the width of the page, intended for writing or drawing.



Produced in a certified company

**VBG GROUP TRUCK EQUIPMENT GMBH** · Girmesgath 5 · D-47803 Krefeld  
[www.ringfeder-rf.com](http://www.ringfeder-rf.com)

 MEMBER OF VBG GROUP